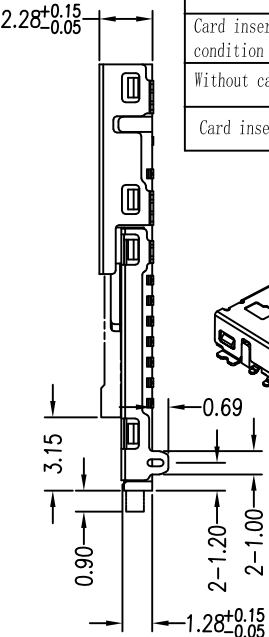
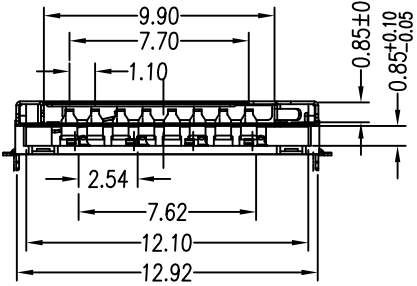
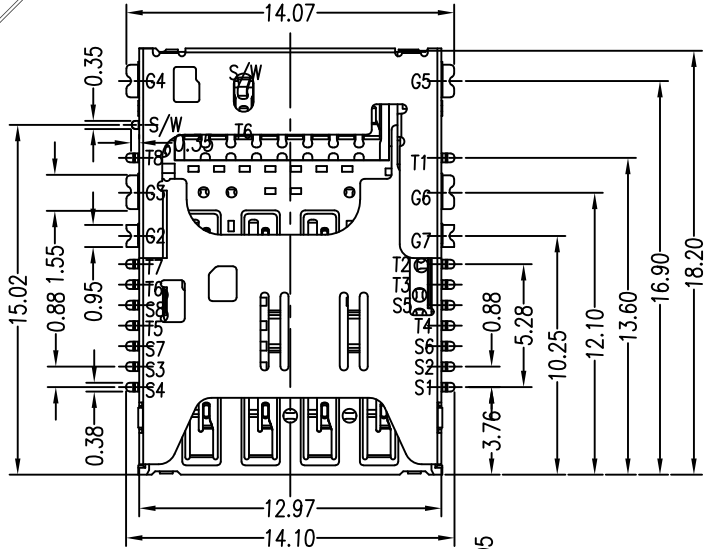


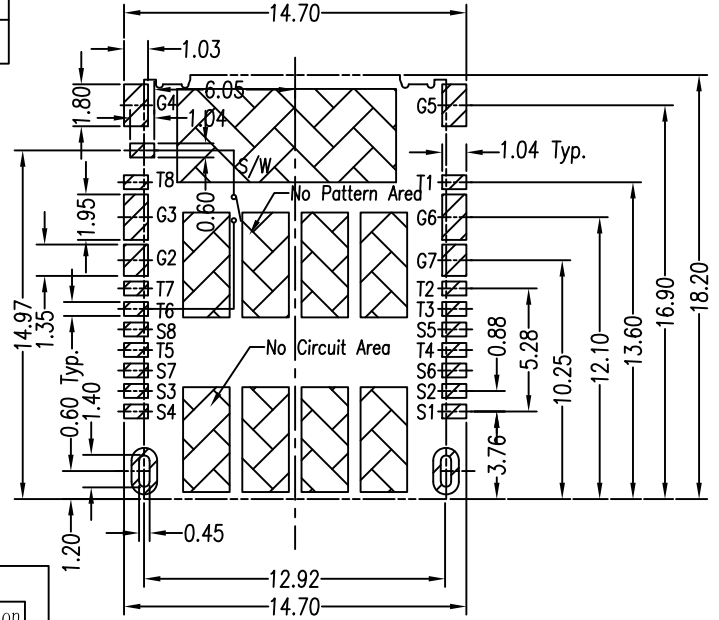
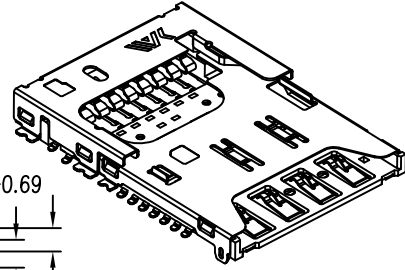


REV	EC No.	DESCRIPTION	Symbol	DATE
A	/	new release	/	Dec. 11, 2019



Circuit diagram for Detection Switch of micro SD card

Card insertion condition	Card detect switch	Circuit
Without card	OPEN	T6 — S/W
Card insertion	CLOSE	T6 — S/W



*.please help to use tin thickness of SMT: 0.15mm min.
RECOMMENDED PCB LAYOUT
 GENERAL TOLERANCE ±0.05

SPECIFICATION:
 1.MATERIAL:
 1.1 HOUSING:THERMOPLASTICS, LCP UL94V-0
 1.2 TERMINAL:COPPER ALLOY
 1.3 SHELL:STAINLESS STEEL
 2.PLATED
 2.1 TERMINAL:G/F PLATED ON CONTACT AREA
 TIN ON SOLDER AREA
 2.2 SHELL:G/F PLATED ON SOLDER AREA
 3.ELECTRICAL CHARACTERISTICS:
 3.1 CURRENT RATING:DC 0.5A max.
 3.2 VOLTAGE RATING:DC 30V.
 3.3 CONTACT RESISTANCE: 50mΩ max
 3.4 INSULATION RESISTANCE:1000MΩ min.
 at 500V DC.
 3.5 WITHSTANDING VOLTAGE:500V AC
 for 1 minute.
 4.OPERATION TEMPERATURE:-40°C~+85°C
 5.DURABILITY :3000 CYCLES
 6.PACKAGE: TAPE REEL,1000PCS/REEL

No.	DESCRIPTION
T1	DAT2
T2	CD/DAT3
T3	CMD
T4	VDD
T5	CLK
T6	VSS(GND)
T7	DATO
T8	DAT1
S/W	Card Detettion

MICRO SD PIN DEFINE

No.	description
S1	Vcc
S2	RST
S3	CLK
S4	Reserved
S5	GND
S6	Vpp
S7	I/O
S8	Reserved

MICRO SIM PIN DEFINE

COMPATIBLE WITH MOLEX:
 104168-1620

For more information, please help to contact: connmold@foxmail.com Tel.:18922965797

WWW.connmold.COM		ConnMold	
DIMENSION UNITS	TOLERANCE		
MM	X±0.50 .XX±0.25 .X±0.35 .XXX±0.15	PART NAME	COMBO MICRO SIM +MICRO SD 2.28MM HEIGHT
DRWN:Robert	Dec.11,2019	PART NUMBER	CMMSM661005
CHK'D:Yuri	Dec.11,2019	REVISION	A
APPR:Linda	Dec.11,2019	CUSTOMER	GENERAL MARKET
THIRD ANGLE PROJECTION	CUSTOMER P/N	SHEET NUMBER	1 OF 2
	/		