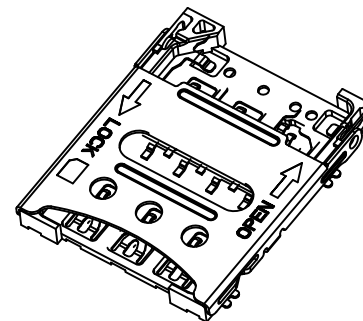


REV	EC No.	DESCRIPTION	Symbol	DATE
A	/	new release	/	Jan. 12, 2021

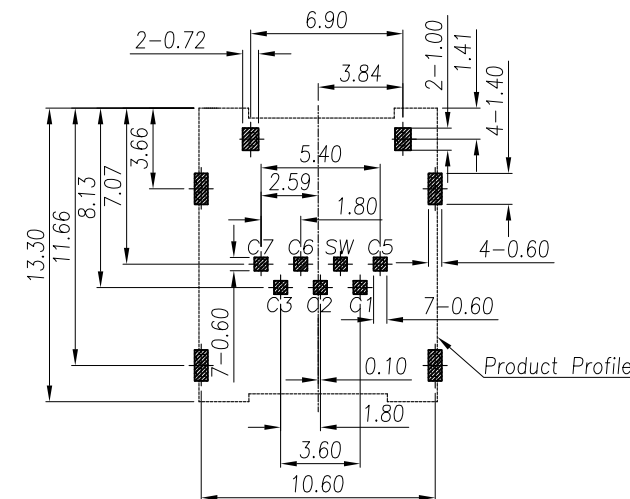


NOTE:

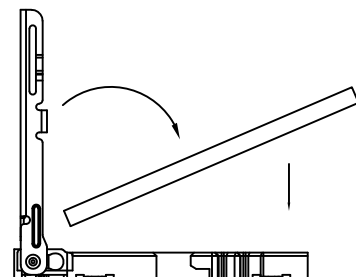
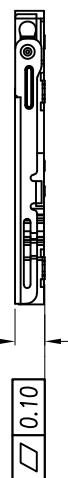
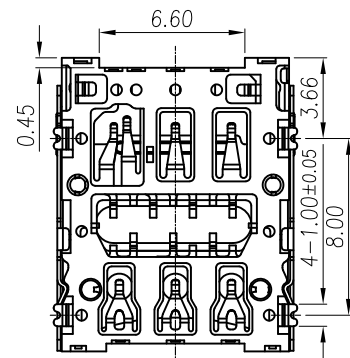
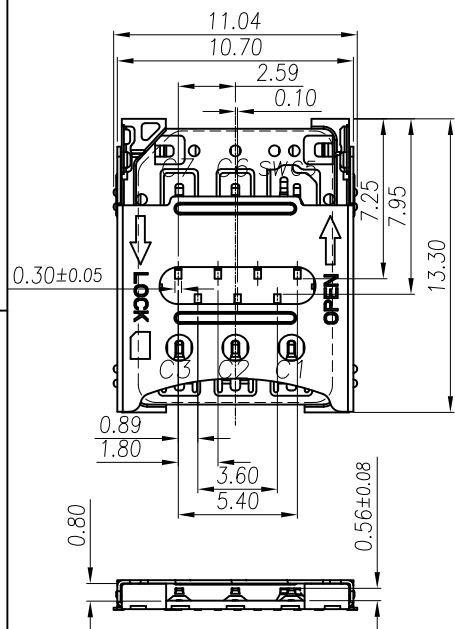
- MATERIAL:
HOUSING: LCP, BLACK, UL 94V-0
CONTACT: PHOSPHOR BRONZE, T=0.10MM
SHELL: STAINLESS STEEL T=0.15MM
- FINISH:
CONTACT: 30u"Min PLATING OVER ALL
GOLD FLASH ON THE CONTACT AREA AND
SOLDER AREA
- RATED PARAMETERS OF CONNECTOR
3-1. Operating temperature: -40°C to +85°C
3-2. Rated Current: 0.5A
3-3. Rated Voltage: 30V DC Per Contact
- ELECTRICAL MECHANICAL ENVIRONMENTAL
4-1. Dielectric withstanding Voltage: 500V AC min
4-2. Insulation Resistance: 1000MΩ Min
4-3. Durability: 3000 cycles
- PACKAGE: TAPE REEL, 1800PCS/REEL



3D VIEW



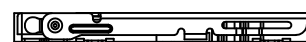
SIM CARD	
Pin No.	NAME
C1	VCC
C2	RST
C3	CLK
C5	GND
C6	VPP
C7	I/O
SW	DETECTION SWITCH



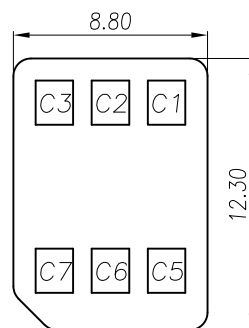
STEP 1 INSERT Nano-SIM CARD



STEP 2 PUSH THE SHELL



STEP 3 FINISH



NANO SIM CARD

For more information, please help to contact: connmold@foxmail.com , Tel.: 18922965797			
WWW.CONNMOLD.COM		<h1>ConnMold</h1>	
DIMENSION UNITS	TOLERANCE		
MM	X±0.50 .XX±0.25 .X±0.35 .XXX±0.15	PART NAME	NANO SIM FLIP TYPE TYPE 1.35MM HEIGHT
DRWN: Robert	jan. 12, 2021	PART NUMBER	CMNSM661001
CHK'D: Yuri	jan. 12, 2021	REVISION	A
APPR: Linda	jan. 12, 2021	CUSTOMER	GENERAL MARKET
THIRD ANGLE PROJECTION	CUSTOMER P/N	CUSTOMER	SHEET NUMBER
	/	GENERAL MARKET	1 OF 2