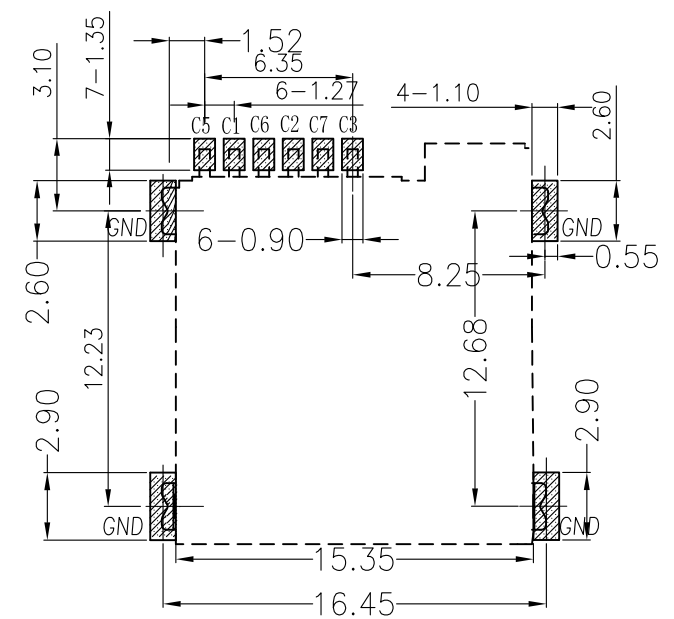
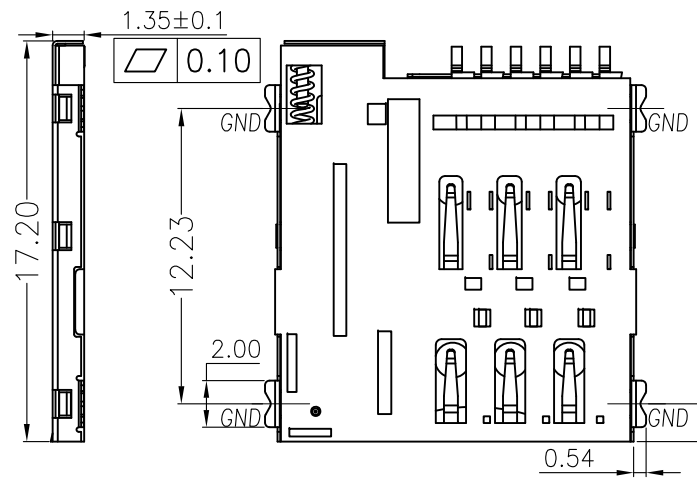
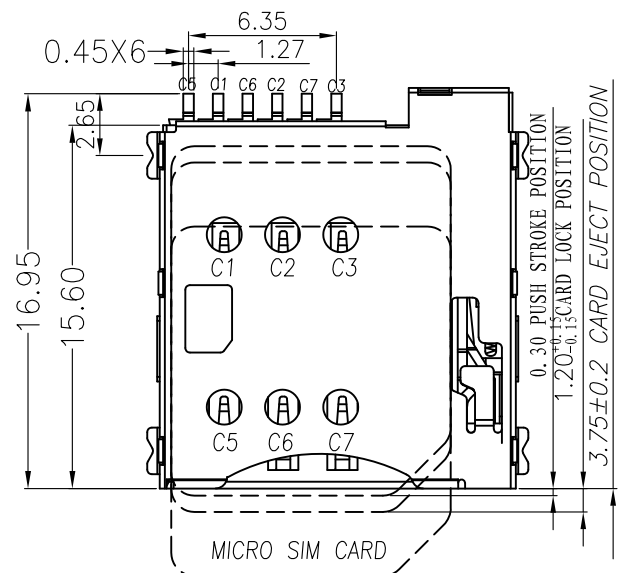
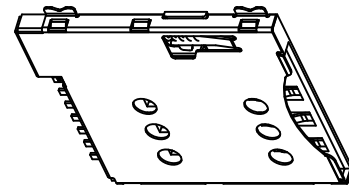


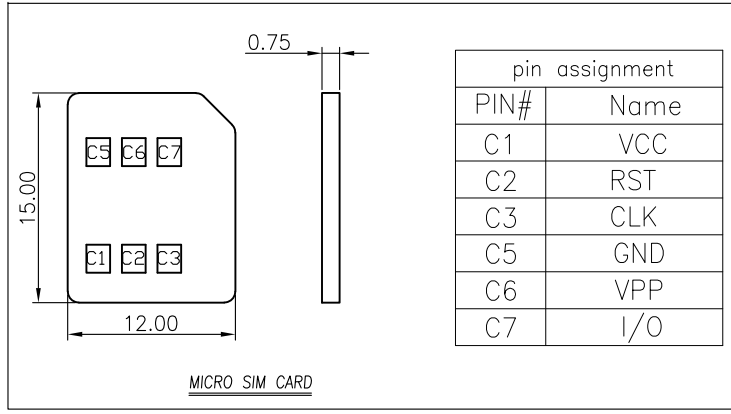
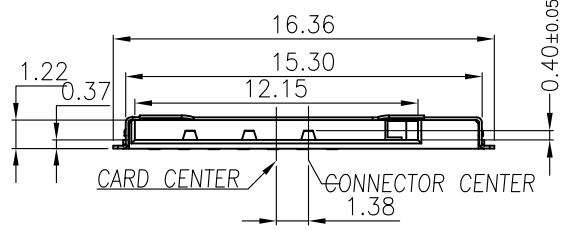
REV	EC No.	DESCRIPTION	Symbol	DATE
A	/	new release	/	Dec. 11, 2019



RECOMMENDED PCB LAYOUT  
GENERAL TOLERANCE ±0.05



- SPECIFICATION:**
- MATERIAL:**
    - HOUSING:THERMOPLASTICS, LCP UL94V-0
    - TERMINAL:COPPER ALLOY
    - SHELL:STAINLESS STEEL
  - PLATED**
    - TERMINAL:G/F PLATED ON CONTACT AREA  
TIN ON SOLDER AREA
    - SHELL:G/F PLATED ON SOLDER AREA
  - ELECTRICAL CHARACTERISTICS:**
    - CURRENT RATING:DC 0.5A max.
    - VOLTAGE RATING:DC 30V.
    - CONTACT RESISTANCE: 50mΩ max
    - INSULATION RESISTANCE:1000MΩ min.  
at 500V DC.
    - WITHSTANDING VOLTAGE:500V AC  
for 1 minute.
  - OPERATION TEMPERATURE:**-40°C~+85°C
  - DURABILITY :**3000 CYCLES
  - PACKAGE:** TAPE REEL,1000PCS/REEL



For more information, please help to contact: connmold@foxmail.com Tel.:18922965797

WWW.connmold.COM		<b>ConnMold</b>	
DIMENSION UNITS	TOLERANCE		
MM	X±0.50 .XX±0.25 .X±0.35 .XXX±0.15	PART NAME <b>MICRO SIM PUSH TYPE 1.35MM HEIGHT</b>	
DRWN:Robert	Dec.11,2019	PART NUMBER <b>CMMSM661004</b>	
CHK'D:Yuri	Dec.11,2019	REVISION <b>A</b>	
APPR:Linda	Dec.11,2019	SHEET NUMBER <b>1 OF 2</b>	
THIRD ANGLE PROJECTION	CUSTOMER P/N	CUSTOMER	
	/	<b>GENERAL MARKET</b>	

6

5

4

3

2

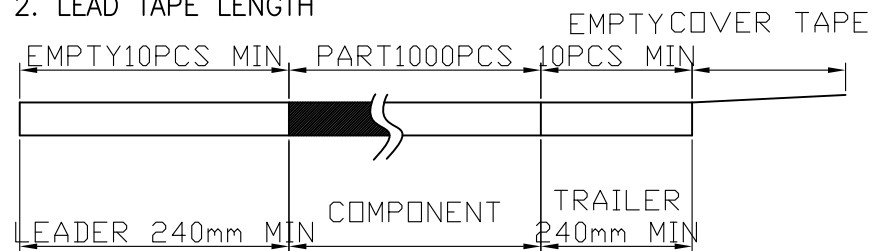
1

REV	EC No.	DESCRIPTION	Symbol	DATE
A	/	new release	/	Dec. 11, 2019



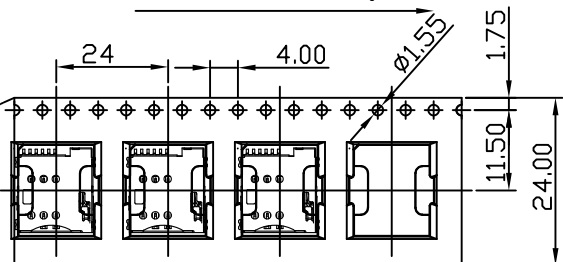
## NOTES

1. NUMBER OF CONNECTORS:1000PCS/REEL
2. LEAD TAPE LENGTH



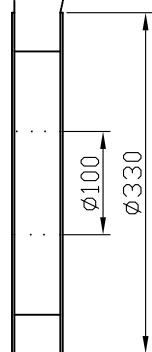
3. QUANTITY:10000PCS/CARTON

User Direction of Unreeling

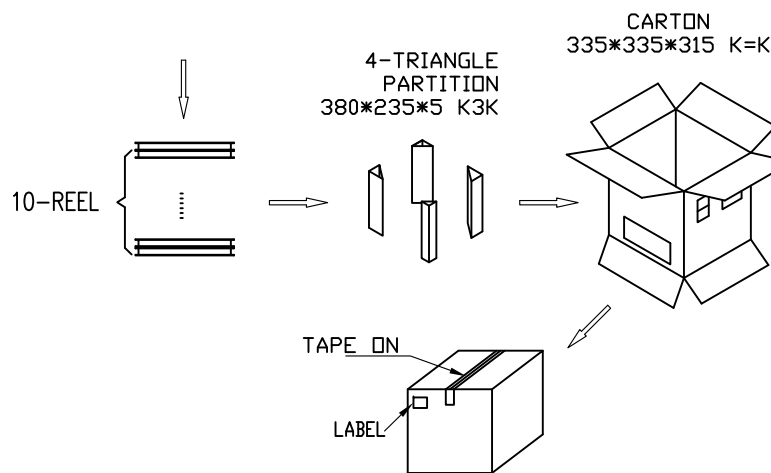
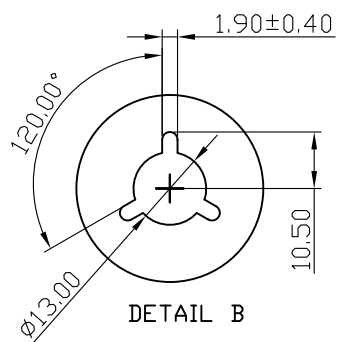
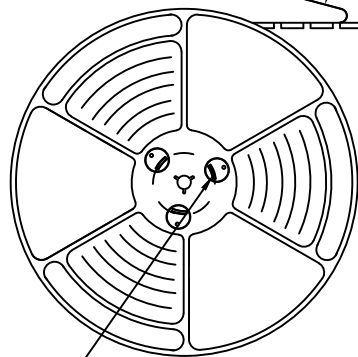
COVER TAPE PEELING ANGLE:165°~180°  
PEELING FORCE:20~130g

CARRIER TAPE

User Direction of Unreeling



DETAIL-B

For more information, please help to contact: [connmold@foxmail.com](mailto:connmold@foxmail.com) Tel.: 18922965797

WWW.connmold.COM		<b>ConnMold</b>	
DIMENSION UNITS	TOLERANCE		
MM	X±0.50 .XX±0.25 .X±0.35 .XXX±0.15	PART NAME	MICRO SIM PUSH TYPE 1.35MM HEIGHT
DRWN:Robert	Dec.11,2019	PART NUMBER	CMMSM661004
CHK'D:Yuri	Dec.11,2019	REVISION	A
APPR:Linda	Dec.11,2019	CUSTOMER	GENERAL MARKET
THIRD ANGLE PROJECTION	CUSTOMER P/N	SHEET NUMBER	
	/	2 OF 2	

6

5

4

3

2

1