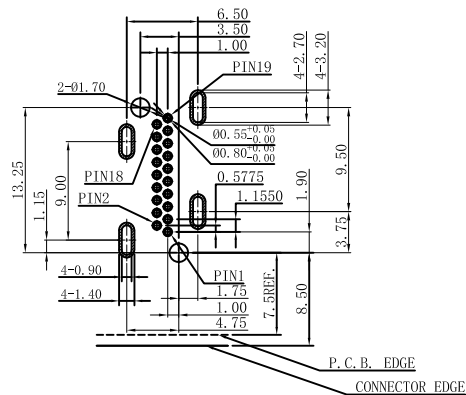
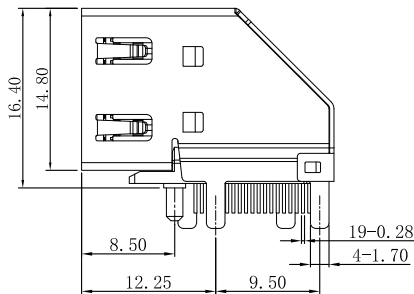
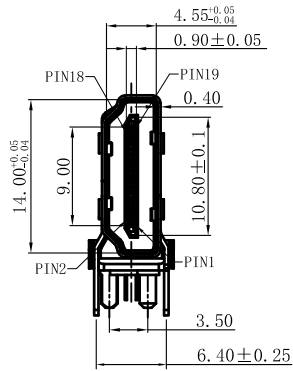
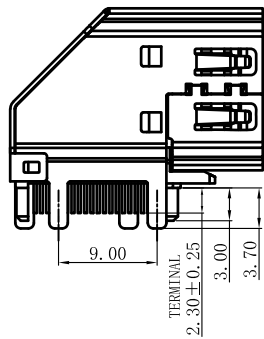
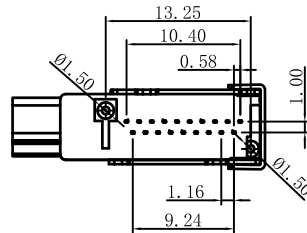
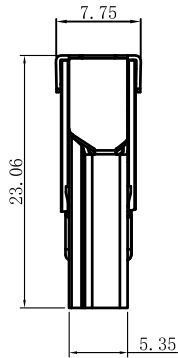




| REV | EC No. | DESCRIPTION | Symbol | DATE |
|-----|--------|-------------|--------|---------------|
| A | / | new release | / | Oct. 12, 2021 |
| | | | | |
| | | | | |



RECOMMENDED PCB LAYOUT (TOP VIEW)
TOLERANCE: ±0.05mm

NOTES:

1. MATERIAL:

- 1.1 Housing: High Temperature Thermoplastic UL94V-0; Color Black.
- 1.2 Terminal: Copper Alloy. T=0.20mm
- 1.3 Shell: Copper Alloy. T=0.40mm

2. SPECIALITY:

- 2.1 Rated current: 0.5A
- 2.2 Rated voltage: 30V
- 2.3 Contact Resistance: 30mΩ MAX
- 2.4 Insulation Resistance: 100MΩ MIN 500V DC
- 2.5 Dielectric withstanding voltage: 100V AC.
- 2.6 Durability: 10000 Cycles Min.
- 2.7 Insertion Force: 44.1N MAX
- 2.8 Withdrawal Force: 9.8N~44.1N
- 2.9 Operating condition: Temperature -40°C ~ +85°C; Humidity 80% R.H MAX

3. PACKAGE: Tray

| | | | |
|----|-----------|-----|--|
| C | SHELL | 1 | C2680R-H Ni 50u" PLATING ALL OVER |
| B | TERMINAL | 19 | C2680R-H, 1U" Au on contact area, Tin on solder area |
| A | HOUSING | 1 | LCP E130i UL94V-0 BLACK |
| NO | PART NAME | QTY | MATERIAL PLATING & COLOR |

For more information, please help to contact: connmold@foxmail.com, Tel.: 18922965797

| | | | |
|------------------------|--|-------------------|-------------------------------|
| WWW.CONNMOLD.COM | | <h1>ConnMold</h1> | |
| DIMENSION UNITS | TOLERANCE | | |
| MM | X ± 0.50 .XX ± 0.25 .X ± 0.35 .XXX ± 0.15 | PART NAME | HDMI A DIP TYPE SIDE ENTRY |
| DRWN: Robert | Oct. 12, 2021 | PART NUMBER | CMHMF661007 |
| CHK'D: Yuri | Oct. 12, 2021 | REVISION | A |
| APPR: Linda | Oct. 12, 2021 | CUSTOMER | GENERAL MARKET |
| THIRD ANGLE PROJECTION | CUSTOMER P/N | SHEET NUMBER | 1 OF 2 |
| | / | | |