

6

5

4

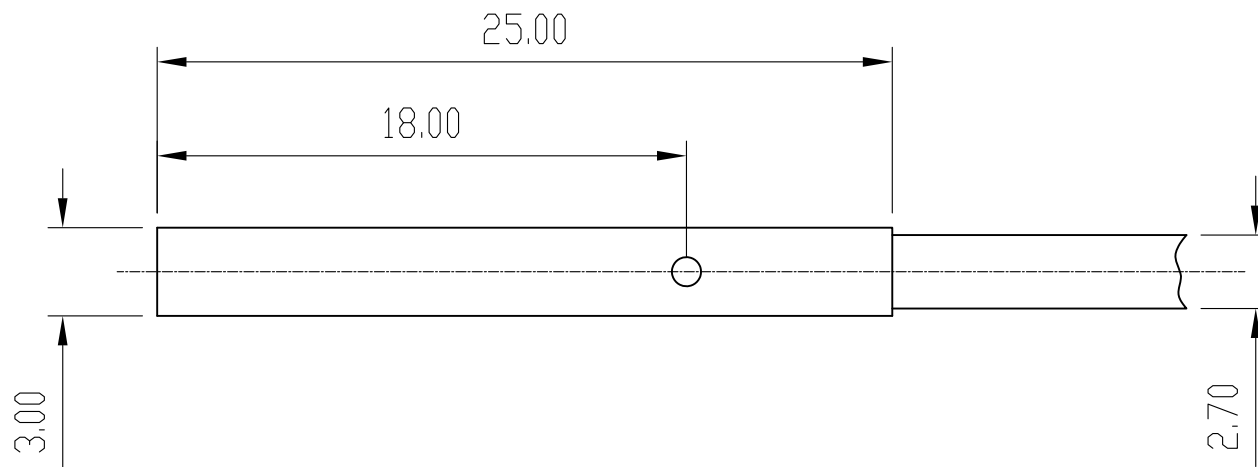
3

2

1



REV	EC No.	DESCRIPTION	Symbol	DATE
A	/	new release	/	Mar. 12, 2018



NOTES :

- 1.0. Spec.φ3
- 2.0. Metal cover housing: YES, Totally
- 3.0. Sensor distance: 0.60mm
- 4.0. Shell Material:Stainless steel
- 5.0. Rated Voltage:10~30V DC
- 6.0. Pulse Voltage: 10% max
- 7.0. Unload Current: 10mA max
- 8.0. Load Current: 100mA
- 9.0. Leakage current:0.01mA max
- 10.0 Voltage drop: 1.5V max
- 11.0 Frequency: 2K HZ
- 12.0 Response Time:0.1ms
- 13.0 Power On/Off delay: 15% (Sr) max
- 14.0 Repeat accuracy: 1.0 (Sr) max
- 15.0 Waterproof grade: IP67
- 16.0 Temperature Range: -25°C~+70°C
- 17.0 Temperature change: 10% (Sr) Max
- 18.0 Short protection: YES
- 19.0 Overload current: 120mA
- 20.0 Contact surface material:POM

CMSNS6X1001

- 1: DC3 CABLE 10~30V NPN NORMAL OPEN
- 2: DC3 CABLE 10~30V NPN NORMAL CLOSE
- 3: DC3 CABLE 10~30V PNP NORMAL OPEN
- 4: DC3 CABLE 10~30V PNP NORMAL CLOSE

For more information, please feel free to contact Neal. His email is :connmold@foxmail.com Tel:18922965797

WWW.connmold.COM		ConnMold	
DIMENSION UNITS	TOLERANCE		
MM	X±0.50 .XX±0.25 .X±0.35 .XXX±0.15	PART NAME INDUCTANCE SENSOR DC THIN MINI SMALL SENSOR	
DRWN:Robert	Mar. 12, 2018	PART NUMBER CMSNS6X1001	
CHK'D:Yuri	Mar. 12, 2018	REVISION A	
APPR:Lee	Mar. 12, 2018	SHEET NUMBER 1 OF 1	
THIRD ANGLE PROJECTION	CUSTOMER P/N	CUSTOMER	
	/	GENERAL MARKET	

6

5

4

3

2

1