

6

5

4

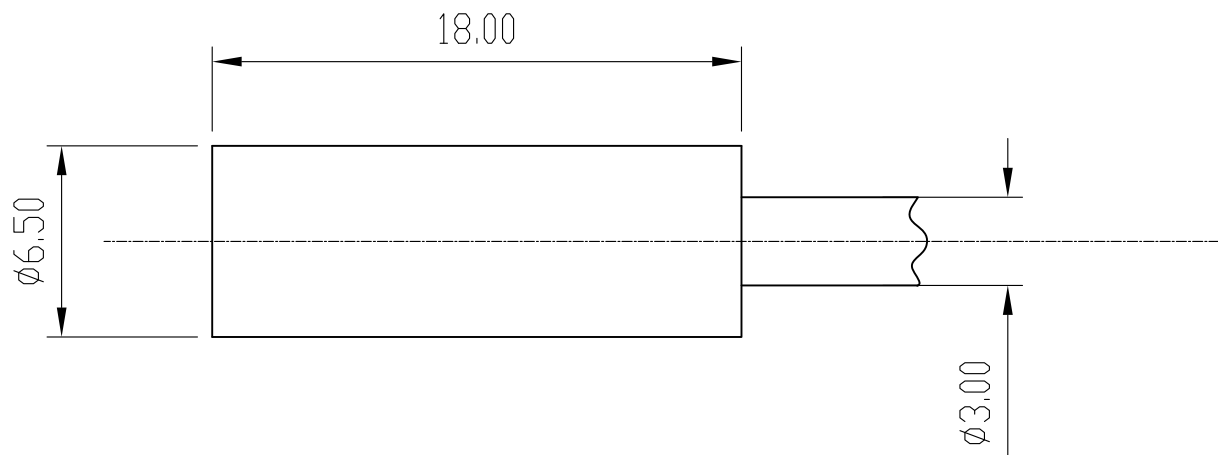
3

2

1



REV	EC No.	DESCRIPTION	Symbol	DATE
A	/	new release	/	Mar. 12, 2018



NOTES :

- 1.0. Spec. $\phi 6.50$ mm
- 2.0. Metal cover housing: YES, Totally
- 3.0. Sensor distance: 1.00mm
- 4.0. Shell Material: Stainless steel
- 5.0. Rated Voltage: 10~30V DC
- 6.0. Pulse Voltage: 10% max
- 7.0. Unload Current: 10mA max
- 8.0. Load Current: 200mA
- 9.0. Leakage current: 0.01mA max
- 10.0. Voltage drop: 1.5V max
- 11.0. Frequency: 2K HZ
- 12.0. Response Time: 0.1ms
- 13.0. Power On/Off delay: 15% (Sr) max
- 14.0. Repeat accuracy: 1.0 (Sr) max
- 15.0. Waterproof grade: IP67
- 16.0. Temperature Range: $-25^{\circ}\text{C} \sim +70^{\circ}\text{C}$
- 17.0. Temperature change: 10% (Sr) Max
- 18.0. Short protection: YES
- 19.0. Overload current: 220mA
- 20.0. Contact surface material: POM

CMSNS6X1002

- 1: DC3 CABLE 10~30V NPN NORMAL OPEN
- 2: DC3 CABLE 10~30V NPN NORMAL CLOSE
- 3: DC3 CABLE 10~30V PNP NORMAL OPEN
- 4: DC3 CABLE 10~30V PNP NORMAL CLOSE

For more information, please feel free to contact Neal. His email is :connmold@foxmail.com Tel:18922965797

WWW.connmold.COM		<h1>ConnMold</h1>	
DIMENSION UNITS	TOLERANCE		
MM	X \pm 0.50	.XX \pm 0.25	PART NAME $\phi 6.50$ mm INDUCTANCE SENSOR DC THIN MINI SMALL SENSOR
	.X \pm 0.35	.XXX \pm 0.15	
DRWN:Robert	Mar. 12, 2018	PART NUMBER	REVISION
CHK'D:Yuri	Mar. 12, 2018	CMSNS6X1002	A
APPR:Lee	Mar. 12, 2018	CUSTOMER	SHEET NUMBER
THIRD ANGLE PROJECTION	CUSTOMER P/N	GENERAL MARKET	1 OF 1
	/		

6

5

4

3

2

1