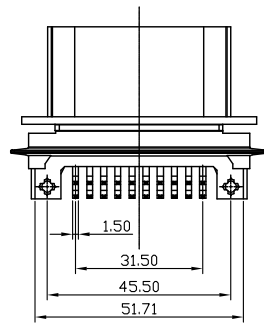
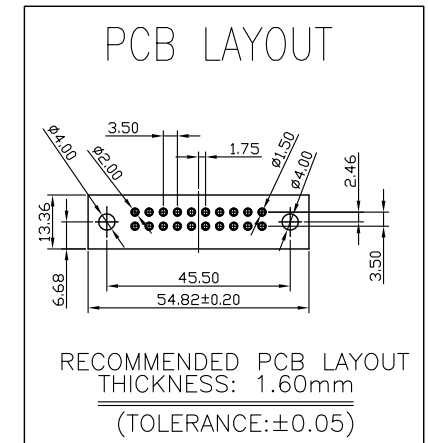
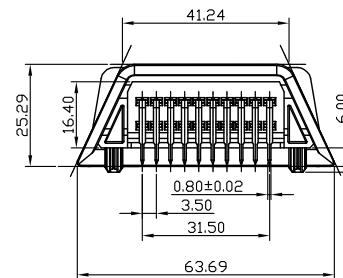
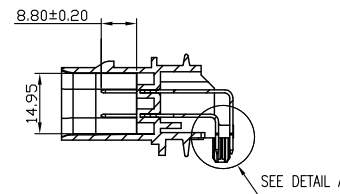
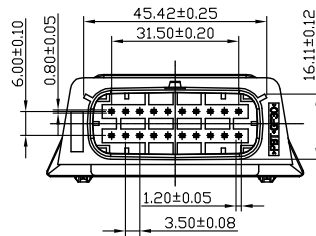
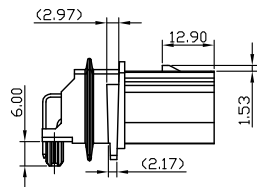
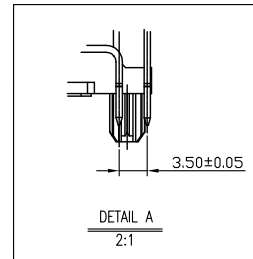
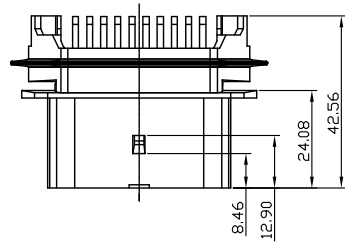
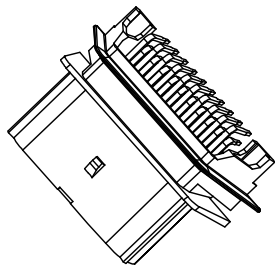


REV	EC No.	DESCRIPTION	Symbol	DATE
A	/	new release	/	Feb 27, 2023



NOTES
 1.GENERAL:
 PCB INTENDED TO BE 1.60MM THICK
 2.MATERIAL
 2.1 HOUSING :PBT +30%GF, COLOR: BLACK
 2.2 TERMINAL: COPPER ALLOY,TIN PLATED OVERALL
 3.PHYSICAL CHARACTERISTICS
 3.1 CIRCUITS: 20
 3.2 DURABILITY :10 MATING CYCLES
 3.3 KEY TO MATING PART: YES
 3.4 LOCK TO MATING PART: YES
 3.5 PITCH:3.50MM
 3.6 ORIENTATION:RIGHT ANGEL
 3.7 OPERATING TEMPERATURE: -40°C TO +85°C
 3.8 WAVE SOLDER PEAK TEMPERATURE: 260°C 5S
 4. PACKAGE:
 TRAY, 200PCS/TRAY

For more information, please feel free to contact Neal. His email is :connmold@foxmail.com Tel:18922965797

WWW.connmold.COM		ConnMold	
DIMENSION UNITS	TOLERANCE		
MM	X±0.50 .XX±0.25 .X±0.35 .XXX±0.15	PART NAME	DUAL ROW 2*10 PCB HEADER KEYING A , SOLDER TAIL
DRWN:Robert	Feb. 27, 2023	PART NUMBER	CMRFA661009
CHK'D:Yuri	Feb. 27, 2023	REVISION	A
APPR:Lee	Feb. 27, 2023	CUSTOMER	GENERAL MARKET
THIRD ANGLE PROJECTION	CUSTOMER P/N	SHEET NUMBER	1 OF 1
	/		