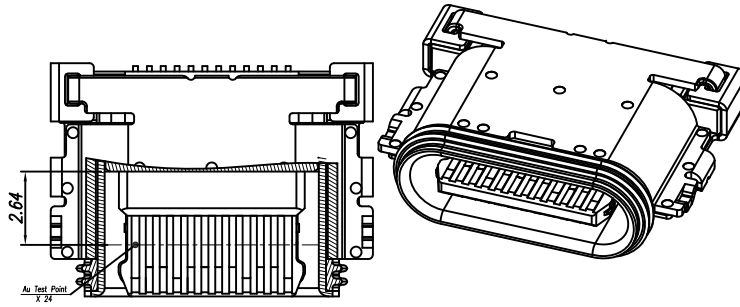
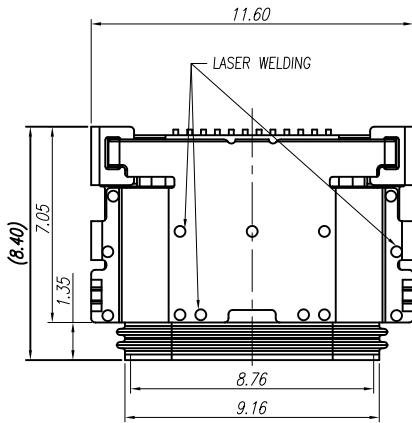
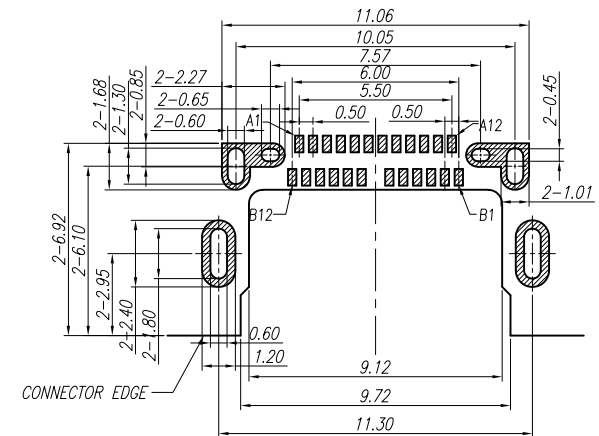


REV	EC No.	DESCRIPTION	Symbol	DATE
A	/	new release	/	Jul. 09, 2022



USC-024XXX-0102

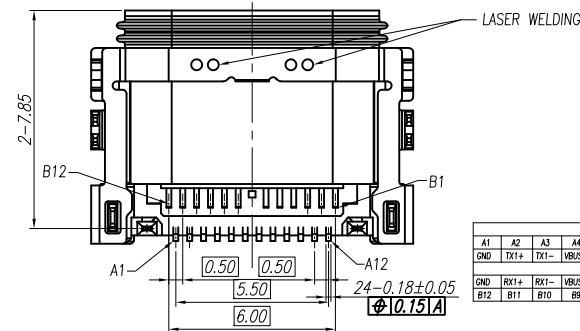
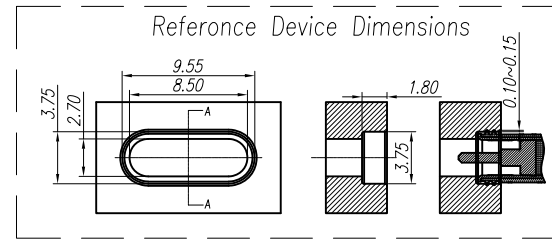
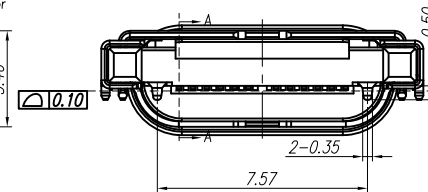
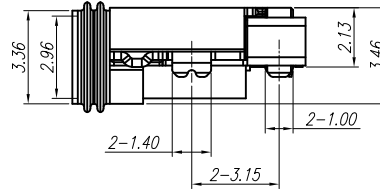
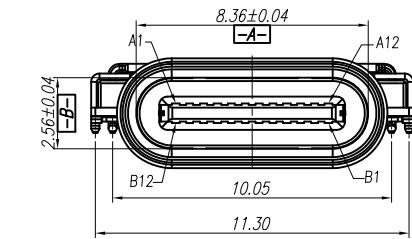
Product serial number  
Terminal Plated: 0: Au 0.5u"Min. 1:Au 1u"Min. 2:Au 2u"Min.  
3:Au 3u"Min.5:Au 5u"Min. A:Au 10u"Min.  
B:Au 15u"Min.C:Au 20u"Min.D:Au 30u"Min.  
Terminal Material: 1:C2680. 2:C5191. 3:7025. 4:18400.  
Housing Material: 1:LCP. 2:PA46. 3:PA9T. 4:PA10T.  
Product Pins.:24 Pins  
USC TYPE C Connector



P.C.B LAYOUT VIEW (TOLERANCE ±0.05)

SPECIFICATION:

- ELECTRICAL CHARACTERISTICS:
  - CURRENT RATING: 5 A
  - TEMPERATURE RANGE: -40 °C ~ 85 °C
  - CONTACT RESISTANCE: 30 MILLIONHM MAX.
  - DIELECTRIC WITHSTANDING VOLTAGE: 100 VAC r.m.s
  - INSULATION RESISTANCE: 100 MEGOHMS MIN.
- MECHANICAL CHARACTERISTICS
  - INSERTION FORCE: 5~20N
  - EXTRACTION FORCE: Initial:8~20N,ATER TEST 6~20N
  - DURABILITY:10,000CYCLES
- THE SHELL LENGTH IS LESS THAN THE MINIMUM SPECIFIED BY THE USB TYPE C STANDARD.AS SUCH IS CANNOT INDEPENDENTLY BE GUARANTEED TO MEET ALL TYPE C MECHANICAL REQUIREMENTS.



PIN ASSIGNMENT												BLADE	SHELL
A1	A2	A3	A4	A5	A6	A7	A8	A9	A10	A11	A12		
GND	TX1+	TX1-	VBUS	CC1	D+	D-	SRV1	VBUS	RX2-	RX2+	GND		
GND	RX1+	RX1-	VBUS	SRV2	D+	D-	CC2	VBUS	TX2+	TX2-	GND		
B12	B11	B10	B9	B8	B7	B6	B5	B4	B3	B2	B1		
												GND	GND

NO.	DESCRIPTION	QTY.	MATERIAL	FINISHED
4	UP+DW_SHELL	1 PCS	STAINLESS STEEL	Ni Plated
3	CONTACT	1 SET	COPPER ALLOY	Au & Ni Plated
2	IM HOUSING	1 PCS	PLASTIC	None
1	MAIN SHELL	1 PCS	STAINLESS STEEL	Ni Plated

For more information, please feel free to contact Neal. His email is :connmold@foxmail.com Tel:18922965797

WWW.connmold.COM		<h1>ConnMold</h1>	
DIMENSION UNITS	TOLERANCE		
MM	X±0.50 .XX±0.25 .X±0.35 .XXX±0.15	PART NAME USB TYPE C 24PIN IP67 H=2.13MM L=8.40MM Sinking Type	
DRWN:Robert	Jul. 09, 2022	PART NUMBER CMWUC661029	
CHK'D:Yuri	Jul. 09, 2022	REVISION A	
APPR:Lee	Jul. 09, 2022	SHEET NUMBER 1 OF 2	
THIRD ANGLE PROJECTION	CUSTOMER P/N	CUSTOMER	
	/	GENERAL MARKET	