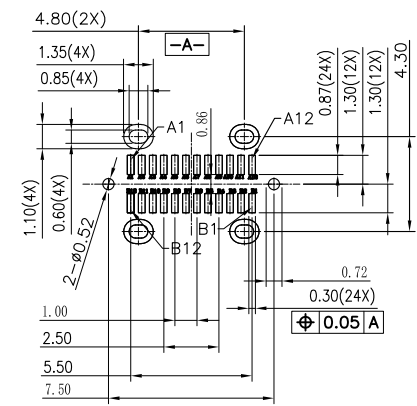
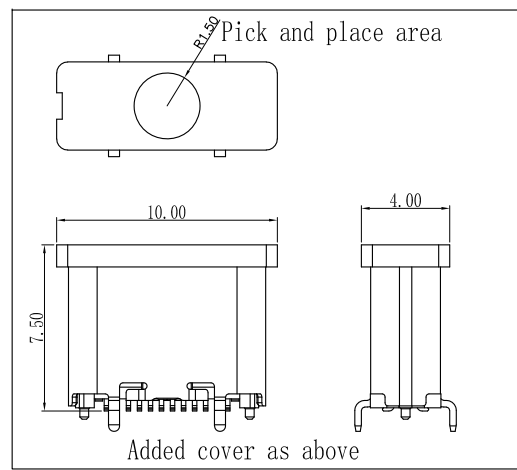
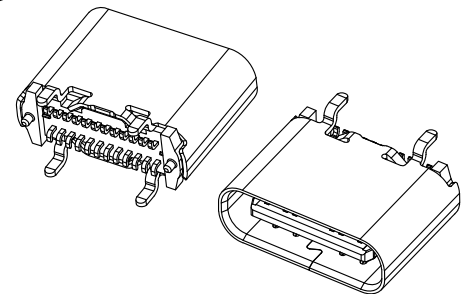
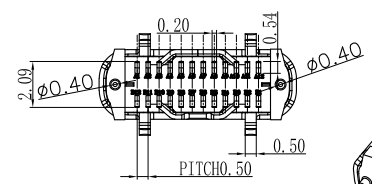


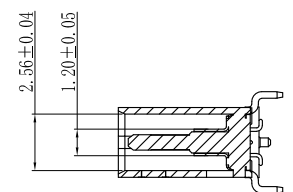
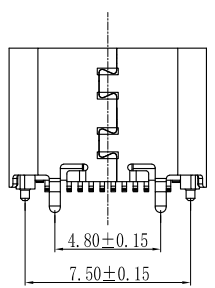
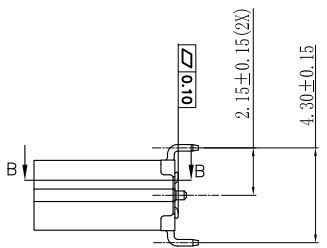
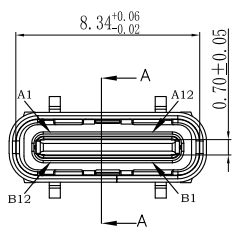
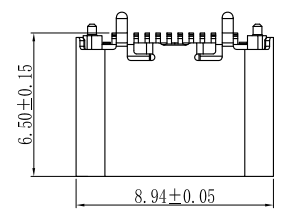


REV	EC No.	DESCRIPTION	Symbol	DATE
A	/	new release	/	Dec. 12, 2020

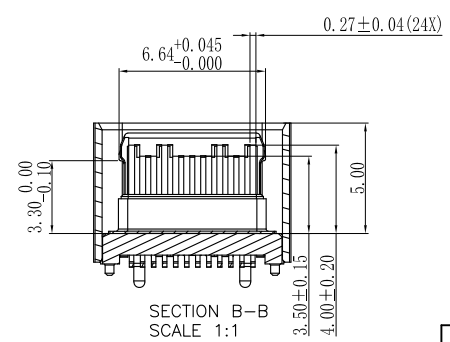


RECOMMENDED PCB LAYOUT  
TOL.: ±0.05

- Note:
- Material:
    - Housing: LCP
    - Contact: C7025, T=0.15mm
    - Shell: SUS304 T=0.3mm
  - ELECTRICAL:
    - CURRENT RATING:
      - VBUS AND GND CONTACTS RATED AT 1.25A PARALLELED FOR A TOTAL OF 5A;
    - INITIAL CONTACT RESISTANCE :40mΩ max
    - DIELECTRIC WITHSTANDING VOLTAGE:
      - 100V AC MIN;
  - MECHANICAL CHARACTERISTICS:
    - MATING FORCE: 5~20N
    - UNMATING FORCE: 8~20N (INITIAL), 6~20N (AFTER 10000 CYCLES)
    - FREQUENCY: 200±50 CYCLES /HOUR, 10000 CYCLES
    - OPERATING TEMPERATURE ; -40°~85°.



SECTION A-A  
SCALE 1:1



SECTION B-B  
SCALE 1:1

A1	GND	B12	GND
A2	SSTXP1	B11	SSRXP1
A3	SSTXN1	B10	SSRXN1
A4	VBUS	B9	VBUS
A5	CC1	B8	SBU2
A6	DP1	B7	DN2
A7	DN1	B6	DP2
A8	SBU1	B5	CC2
A9	VBUS	B4	VBUS
A10	SSRXN2	B3	SSTXN2
A11	SSRXP2	B2	SSTXP2
A12	GND	B1	GND
PIN	SIGNAL NAME	PIN	SIGNAL NAME

For more information, please help to contact: <a href="mailto:connmold@foxmail.com">connmold@foxmail.com</a> Tel:18922965797			
WWW.connmold.COM		<h1>ConnMold</h1>	
DIMENSION UNITS	TOLERANCE		
MM	X±0.50 .XX±0.25 .X±0.35 .XXX±0.15	PART NAME	USB TYPE C RECEPTACLES 24 PIN VERTICAL 6.50MM
DRWN:Robert	Dec.12,2020	PART NUMBER	CMUCF661016A
CHK'D:Yuri	Dec.12,2020	REVISION	A
APPR:Linda	Dec.12,2020	CUSTOMER	GENERAL MARKET
THIRD ANGLE PROJECTION	CUSTOMER P/N	SHEET NUMBER	1 OF 2
	/		